



Introducing IPM 10

The Next Generation of Property Management Software

Property Management for the Next Decade and Beyond

If we listed all the enhancements in IPM 10, it would take more than 15 pages. We've started with a proven, modern development environment and combined the best of IPM 2007 with the best solutions from other industries.

In one leap, we've moved ahead decades, and are committed to staying current no matter where technology and business takes us.

IPM 10 is designed for *users* not *programmers*. It's easy to use by design and its concepts follow natural ways of doing things. It's among the easiest programs to use in the industry – our early adopters started using it before the Users Guide was even available, and never asked "how do I..."

New Features Include:

- **ACH/EFT Imports to work with your Bank**
- **WORKS WITH VISTA 64 AND WINDOWS 7**
- **INTEGRATED PDFS**
- **VIEW MULTIPLE SCREENS AT ONCE**
- **INTEGRATED, EASY EMAIL**
- **WORKS WITH WORD, EXCEL**
- **'AD HOC' REPORTING**
- **SAVES PICTURES FOR PROPERTY, UNITS AND TENANTS**
- **UNLIMITED ATTACHMENTS**
- **UNLIMITED USER FIELDS**
- **UNLIMITED INSURANCE**
- **AUTOMATIC UPDATES**
- **MORE INFORMATION ON EVERY SCREEN**
- **HIERARCHICAL GENERAL LEDGER**
- **IMPORTS STANDARD LOCKBOX & UTILITY BILLS**
- **INTEGRATED, POWERFUL TICKLERS**
- **ENHANCED SECURITY AND USER PROFILES**
- **REMOTE OFFICE SUPPORT**
- **INACTIVE STATUS FOR TENANTS, VENDORS**
- **SOPHISTICATED OWNER HANDLING FOR MULTIPLE OWNER PROPERTIES OR MULTIPLE PROPERTY OWNERS**

• *...and literally hundreds more*



IPM 10 uses modern ways of doing things and follows Windows standards. We believe in staying at the 'cutting edge', but just back from the 'bleeding edge.' If you use almost any other office application, you'll feel at home in IPM 10.

MINIMUM SYSTEM REQUIREMENTS

32-bit PC with Windows Vista, Windows 7 or Windows XP
1 gigahertz Pentium processor
1 gigabytes RAM
500 megabytes free harddrive space
DSL Internet connection

RECOMMENDED SYSTEM REQUIREMENTS

64-bit PC with Windows Vista, Windows 7 or Windows XP
2 2.4gigahertz dual Pentium processors
4 gigabytes RAM
2 gigabytes free harddrive space
Broadband, T1 or T3 Internet connection





Introducing IPM 10

The Next Generation of Property Management Software

NEW THROUGHOUT

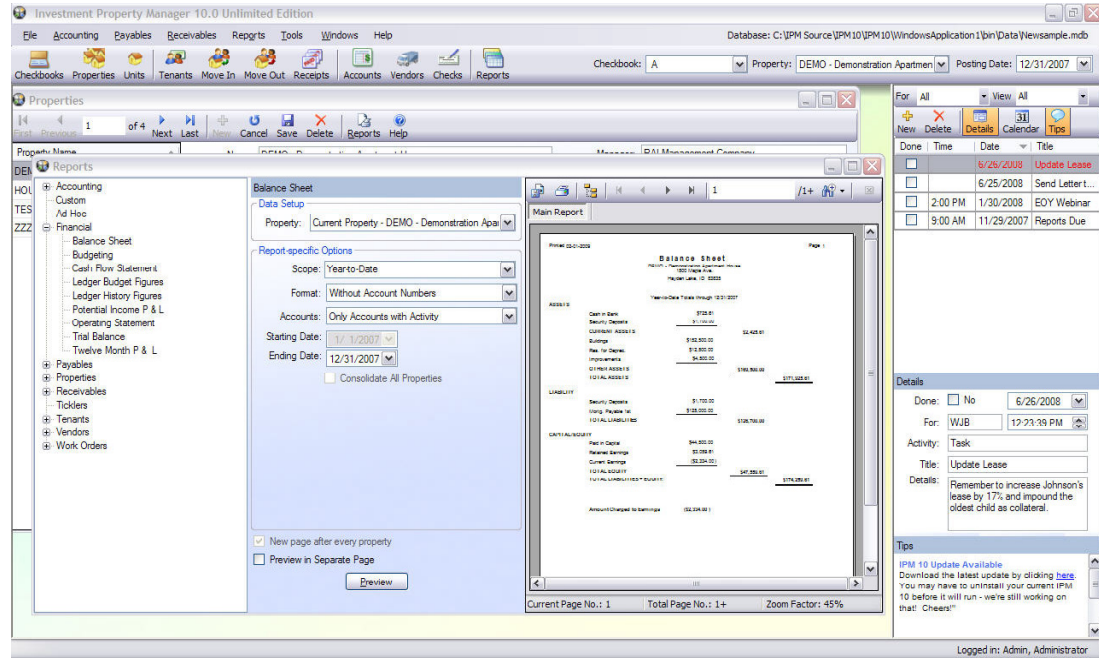
IPM 10 is the first ground-up rewrite of IPM since the mid 1990's, and it will be the foundation for the next decade. It's designed for Vista 64, Windows 7 and beyond.

EASILY INTEGRATED

IPM 10 works with Microsoft Word for mail merge, Excel for reporting, produces effortless PDFs, supports most email clients and is web-friendly.

BEST OF BREED

We've looked at our competitors and analysed the best solutions to common problems, then improved upon them for IPM 10. Compare our reports to our competitors, or look at our check previews!



IPM 10's Main Screen with the Reports Screen and Properties Screen shown.

IPM 10 starts with the best of IPM 2007, and builds from there. IPM 10 uses the concepts and workflow that's made IPM successful for thirty years, but literally everything else is new. It's easy to learn, intuitive to use and utilizes your existing information seamlessly.

We listened to our users, and implemented the changes they wanted: fewer screens, more defaults, easy integration with Office and too many other things to list. Most of all, we've kept the best of IPM 2007's look and feel to make learning easy and natural. (We've still put free tutorials and webinars on our website).

There are half as many screens to go through, making your work faster and more efficient. We've automated functions like monthly charges and posting to streamline your tasks. And IPM supports multiple years, so the Year End Close is a snap—just change the posting date! Seriously!

Everything from entering receipts to printing reports has been enhanced, modernized and improved, yet the concepts and steps are consistent with earlier versions.

IPM 10 is truly the next generation of Property Management Software.

